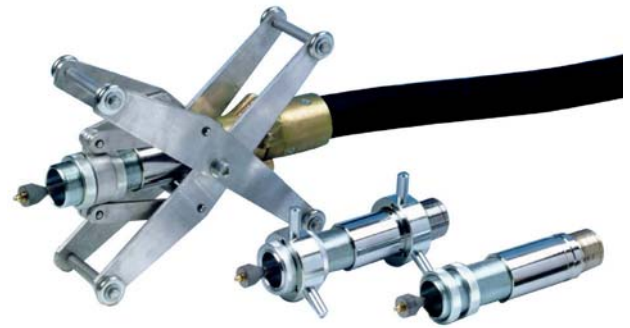


Circleblast Internal Pipe Blasters

The Circleblast Internal Pipe Blasters are designed to blast clean pipes ranging in size from 1¼" to 12" (32 to 305 mm) I.D. The tool connects to an abrasive blast machine in place of a standard nozzle. In operation, the Circleblast nozzle directs the air/abrasive mixture at a deflection tip. This tip causes the blast pattern to fan out into a wide, circular pattern, which cleans the inside of the pipe as the tool is passed through. Two centering devices are available to hold the tool in position during passes in different diameter pipe.



Features and benefits

- Constant cleaning of internal surface
- Cleaning with the highest speed possible
- Saving on time and abrasives
- Adjustable setup for the best cleaning speed
- Easy handling and no down-time
- Blast in only one drive through
- Adjustable for all kind of abrasive
- Very rigged construction

3

PIPEDIAMETER in (mm)	TOOL	TOOL RANGE in (mm)	CENTERING DEVICE	REQUIRED NOZZLE	AIR CONSUMPTION	
					(cfm)	(m ³ /min)
1¼" – 3" (32 – 76 mm)	CB-0	1 1/4" – 3" (35 - 76 mm)	-	-	400	11.3
3" – 12" (76 – 305 mm)	CB-1 CB-2	3" - 5" (76 - 127 mm)	CBC-1	AHBN-8 AHBN-10	225 400	6.4 11.3
	CB-1 CB-2	5" - 12" (127 - 305 mm)	CBC-2	AHBN-8 AHBN-10	225 400	6.4 11.3

ORDERING INFORMATION

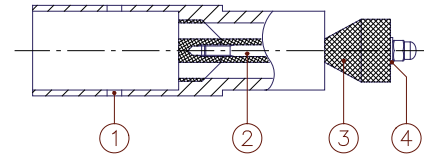
CB Circleblast Assemblies

Part no.	Description
3002100	CB-0 Circleblast for direct mounting on blast hose with ½" I.D. (13x7mm) for pipes 1¼" to 3" (35-76mm) I.D. TC deflection tip
3002200	CB-1 Circleblast complete with: ½" nozzle HBN-8, CBC-1 centering collars, CBC-2 adjustable centering carriage.
3002300	CB-2 Circleblast complete with: 5/8" nozzle HBN-10, CBC-1 centering collars, CBC-2 adjustable centering carriage.

Circleblast Internal Pipe Blasters

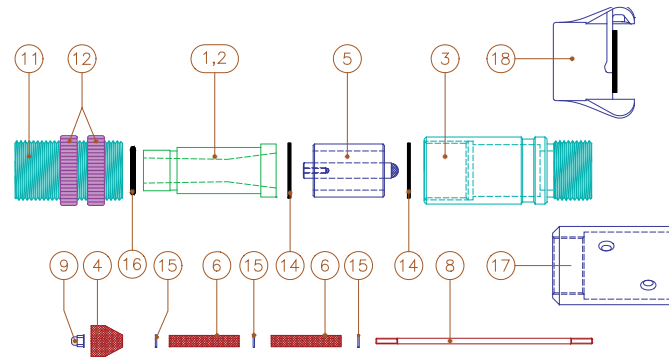
CB-0 Parts List

Item	Part no.	Description
01	3002500	Housing
02	3002600	Bolt
03	3016000	CB-110/1 Deflection tip TC
04	3028000	CB-122 Washer brass



CB-1 and 2 Parts List

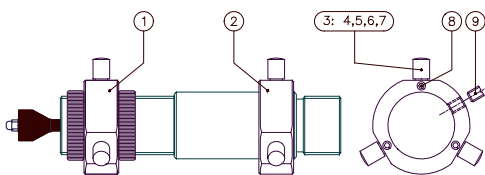
Item	Part no.	Description		
01	2112000	AHBN-8 1/2" (13 mm) nozzle TC		
02	2113000	AHBN-10 5/8" (16 mm) nozzle TC		
03	3015000	CB-111 Tool holder		
04	3016000	CB-110/1 Deflection tip TC	◇	1
05	3018000	CB-112/1 Stem support assembly TC	◇	1
06	3020000	CB-113/1 Throat sleeve TC	◇	2
08	3023000	CB-115 Throat rod	◇	1
09	3024000	CB-116 Tip holding nut	◇	1
11	3025000	CB-117 Protection sleeve threaded		
12	3026000	CB-118 Curled lock nut		
14	3027000	CB-119 Stem support gasket	◇	2
15	3028000	CB-122 Washer brass	◇	2
16	3029000	CB-123 O-ring	◇	1
17	2135000	CHE-2 nozzle holder, aluminum		
18	2163000	CFT cast iron quick coupling		



All (◇)-marked items are included in Circleblast Spare Parts kit (art.nr. 3022000) in quantities shown.

Centering collars for Circleblast

Item	Part no.	Description
	3003300	CBC-1 Centering collars complete for pipes 3" to 5" (76 - 127 mm) I.D. Includes collars and four six-button sets

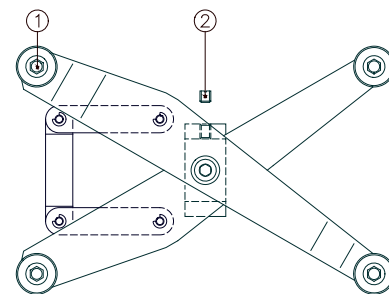


Spare parts for CBC-1 centering collars

01	3004000	Front collar, cad-plate
02	3005000	Rear collar, cad-plate
03	3006000	Centering buttons 4 six-button sets
04	3007000	5/16" (8 mm) long button for 3 1/2" (89 mm) I.D.
05	3008000	9/16" (15 mm) long button for 4" (102 mm) I.D.
06	3009000	13/16" (20 mm) long button for 4 1/2" (115 mm) I.D.
07	3010000	18/16" (28 mm) long button for 5" (127 mm) I.D.
08	3010100	Bolt
09	3010200	Collar locking bolt

Centering carriage for Circleblast

Item	Part no.	Description
	3011000	CBC-2 Centering collars complete for pipes 5" to 12" (127 - 305 mm) I.D.



Spare parts for CBC-1 centering collars

01	3012000	Wheel complete
02	3010200	Locking bolt

Spinnerblast Internal Pipe Blaster

The Spinnerblast tool cleans the interior of pipes up to 12 meters long and ranging in size from 203 mm (8") to 915 mm (36") I.D. The tool connects to most abrasive blasting machines in place of a standard nozzle.

As the tool passes through the length of the pipe being cleaned, abrasive is ejected by two special nozzles mounted on a rotating head. Optimal rotating speed is controlled by the braking system. An adjustable centering carriage supports the tool through the pipe. The chart below shows the recommended centering legs, nozzle sizes and compressor capacities for different pipe diameters.

Features and benefits

- Constant cleaning of internal surface
- Cleaning with the highest speed possible
- Saving on time and abrasives
- Adjustable setup for the best cleaning speed
- Easy handling and no down-time
- Blast in only one drive through
- Adjustable for all kind of abrasive
- Very rigged construction



3

PIPEDIAMETER in (mm)	TOOL	TOOL RANGE in (mm)	CENTERING DEVICE	REQUIRED NOZZLE	AIR CONSUMPTION	
					(cfm)	(m ³ /min)
8" - 36"	SB-636-A	8" - 10" (203 - 254 mm)	SPB-19 use 120 mm legs	2 x ASB 13	200	5.7
				2 x ASB-14	300	8.5
				2 x ASB-16	450	12.8
	SB-636-A	10"- 15" (254 - 381 mm)	SPB-19 use 190 mm legs	2 x ASB-15	300	8.5
	SB-636-A	15"- 23" (381 - 584 mm)	SPB-19 use 290 mm legs	2 x ASB-17	450	12.8
	SB-636-A	23"- 36" (584 - 915 mm)	SPB-19 use 460 mm legs	2 x ASB-17	450	12.8

ORDERING INFORMATION

Part no.	Description
3030000	SB-636-A Spinnerblast incl. SPB-19 carriage, excl. nozzles
3032000	SB-636-C Repair kit. Containing ◇-marked items in quantities below.

Spinnerblast Internal Pipe Blaster

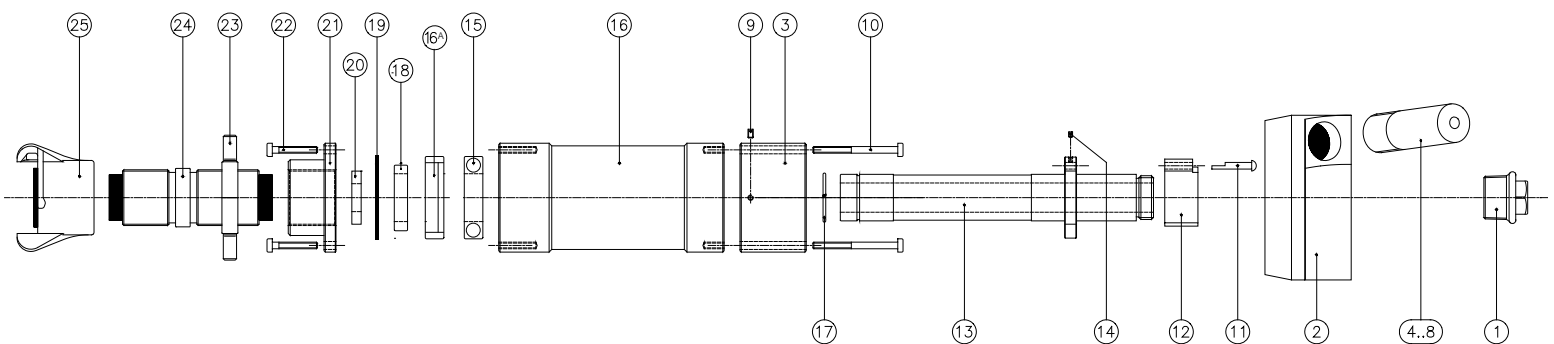
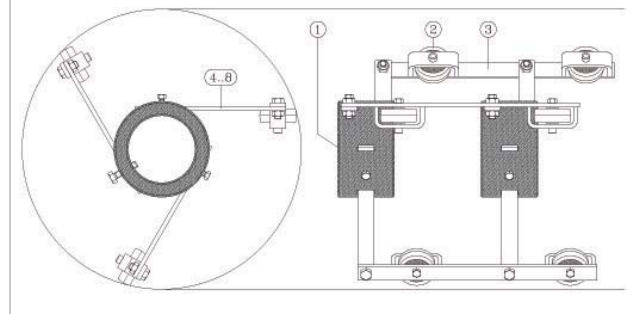
SPB Spinnerblast Internal Pipe Blaster parts list

Item	Part no.	Description		
01	3033000	Pipe plug 1" (25 mm)	◇	4
02	3035000	Rotating nozzle head	◇	1
03	3036000	Brake housing		
04	2107000	Nozzle TC - 6.0 mm orifice, 49 mm long		
05	2108000	Nozzle TC - 8.0 mm orifice, 49 mm long		
06	2109000	Nozzle TC - 8.0 mm orifice, 80 mm long		
07	2110000	Nozzle TC - 9.5 mm orifice, 49 mm long		
08	2111000	Nozzle TC - 9.5 mm orifice, 103 mm long		
09	3037000	Set screw M6 x 8 mm		
10	3038000	Machine screw 65 mm		
11	3039000	Locking pin	◇	1
12	3040000	Brake with lining	◇	1
13	3041000	Tube	◇	1
14	3043000	Set screw M5 x 6 mm		
15	3044000	Double seal light bearing	◇	2
16	3045100	Housing		
16A	3045200	Housing bearing seal		
17	3046000	Tube lock ring	◇	2
18	3047000	Bearing seal	◇	1
19	3048000	Leather dust seal	◇	30
	3048100	Teflon dust seal		
20	3049000	Washer, tungsten carbide	◇	2
21	3050000	End plate, rear		
22	3051000	Machine screw 35 mm		
23	3052000	Locking nut for rear end plate		
24	3053000	Rubber lined nipple 1¼" (32 mm)	◇	2
25	2163000	CFT Quick coupling (cast iron)		

All (◇)-marked items are included in Spinnerblast Spare Parts kit (art.nr. 3032000) in quantities shown.

SPB Spinnerblast Carriage parts list

Item	Part no.	Description
	3055000	Adjustable centering carriage
01	3059000	Carriage collar
02	3056000	Carriage wheel
03	3057000	Arms with wheels
04	3058000	Set of centering legs
05	3060000	SPB-19/12 Centering leg 12 cm
06	3061000	SPB-19/19 Centering leg 19 cm
07	3062000	SPB-19/29 Centering leg 29 cm
08	3063000	SPB-19/46 Centering leg 46 cm
09	3063100	Collar locking screw



Jumbo Internal Pipe Blaster

The Jumbo Internal Pipe Blaster tool cleans the interior of pipes up to 12 meter long and ranging in size from 890 mm (35") to 1600 mm (63") I.D. The tool connects to most abrasive blasting machines in place of a standard nozzle.

As the tool passes through the length of the pipe being cleaned, abrasive is ejected by two special nozzles mounted on a rotating head. Optimal rotating speed is controlled by the braking system. An adjustable centering carriage supports the tool through the pipe.

Features and benefits

- Constant cleaning of internal surface
- Cleaning with the highest speed possible
- Saving on time and abrasives
- Adjustable setup for the best cleaning speed
- Easy handling and no down-time
- Blast in only one drive through
- Adjustable for all kind of abrasive
- Very rigged construction



3

ORDERING INFORMATION

Part no.	Description
3400000	JPB-I Jumbo incl. carriage, excl. nozzles
3410000	JPB-C Repair kit. Containing ◊-marked items in quantities part list.

Jumbo Internal Pipe Blaster - nozzles

Part no.	Description
2007000	ATSDX-4 Tungsten Carbide long venturi nozzle, 6.5mm orifice, length 135mm, 1¼" (32 mm) inlet and fine thread
2008000	ATSDX-5 Tungsten Carbide long venturi nozzle, 8.0mm orifice, length 135mm, 1¼" (32 mm) inlet and fine thread
2009000	ATSDX-6 Tungsten Carbide long venturi nozzle, 9.5mm orifice, length 135mm, 1¼" (32 mm) inlet and fine thread